

SOFTWARE ENGINEERING PROJECT

# My Travel Diary

AUTHORS: GROUP E2

ANASTASIJA NIKOLSKA, KASPARS MINAJEVs, KATRINA  
CHUDNIVECA, ALEKSANDRE TITBERIDZE, XIAOKANG JIN,  
NKUMAWA KAFFO THIERY JORDAN



# Table of contents



Overall description

Requirements specification

Database design

UI design

Navigation diagrams

Partial functional design



# Overall Description

Introduction to My Travel Diary idea  
and main concepts of the software

**CURRENT SITUATION**

**CLIENT**

**BUSINESS REQUIREMENTS**

**SYSTEM USERS**

**ASSUMPTIONS AND DEPENDENCIES**



# Requirements specifications

---

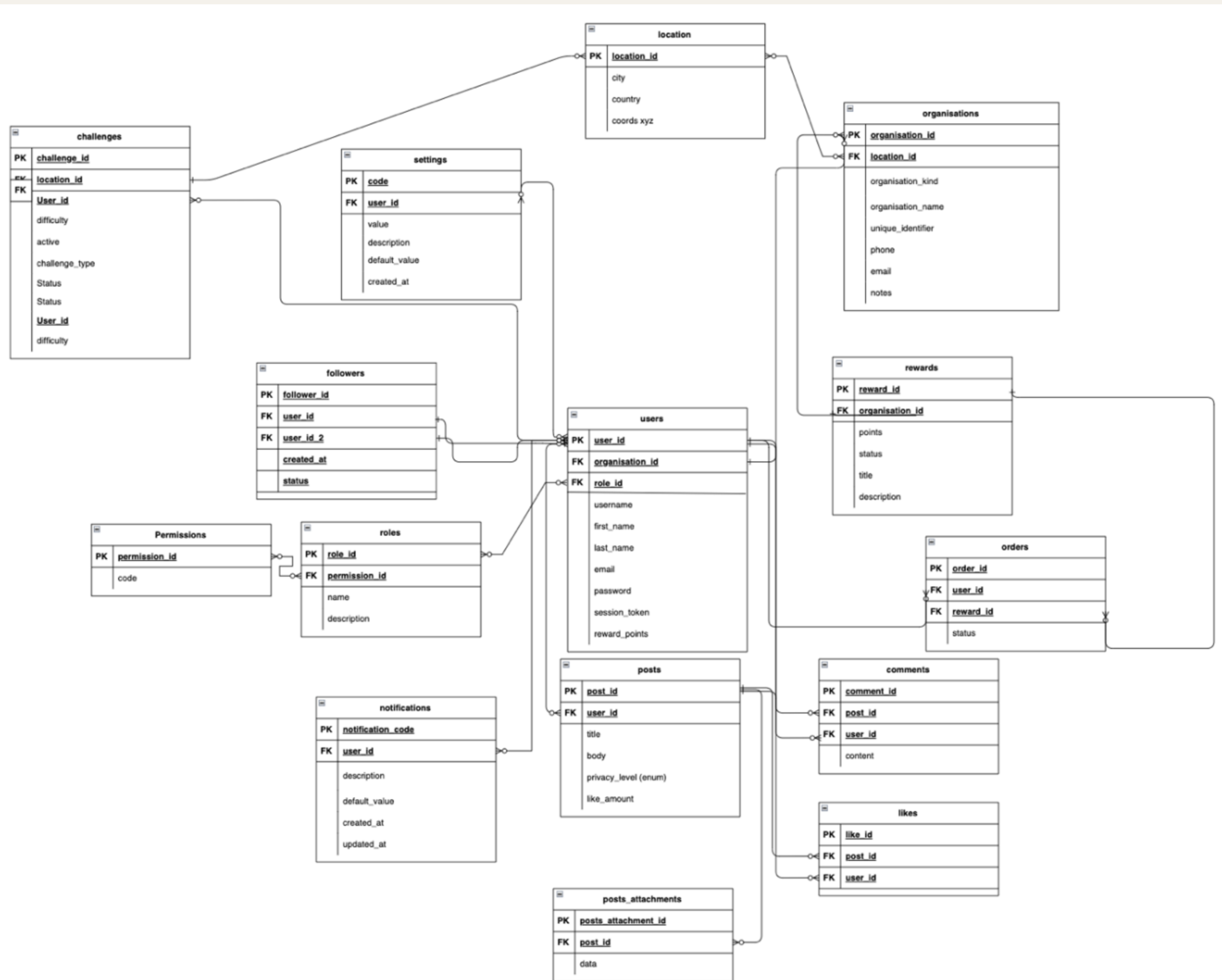
Conceptual  
database model

Functional  
requirements

Non-functional  
requirements



# Conceptual database model

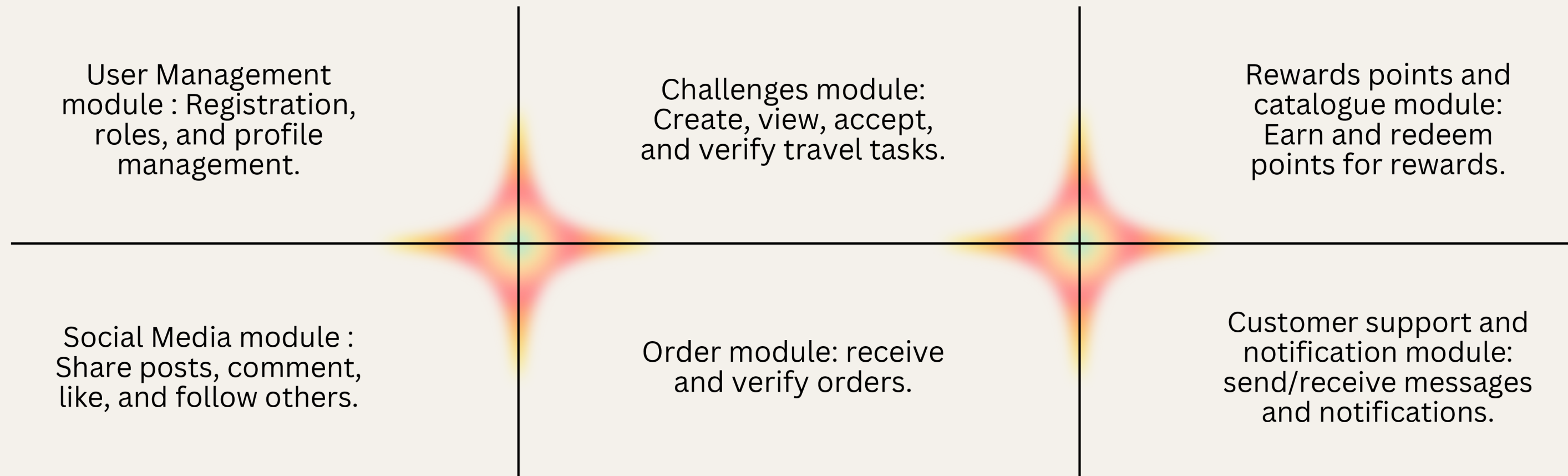


## 2.1.1. DATABASE CONCEPTUAL MODEL



# Functional requirements

## Core modules and features





# Non-functional requirements

---

Performance

Compatibility

Security

Connectivity

Localization

Availability

Accessibility



# Database Design

26 TABLES - SUPPORTING USERS, CHALLENGES, REWARDS AND NOTIFICATIONS

NORMALIZED TO 3NF

INCLUDES SELF RELATION TABLES:  
FOLLOWERS

KEY TABLES:

USERS: PROFILES,  
REWARD POINTS

CHALLENGES: LOCATION  
BASED TASKS

REWARDS: REDEMPTIONS

ORDERS: TRANSACTIONS

POSTS, COMMENTS & LIKES

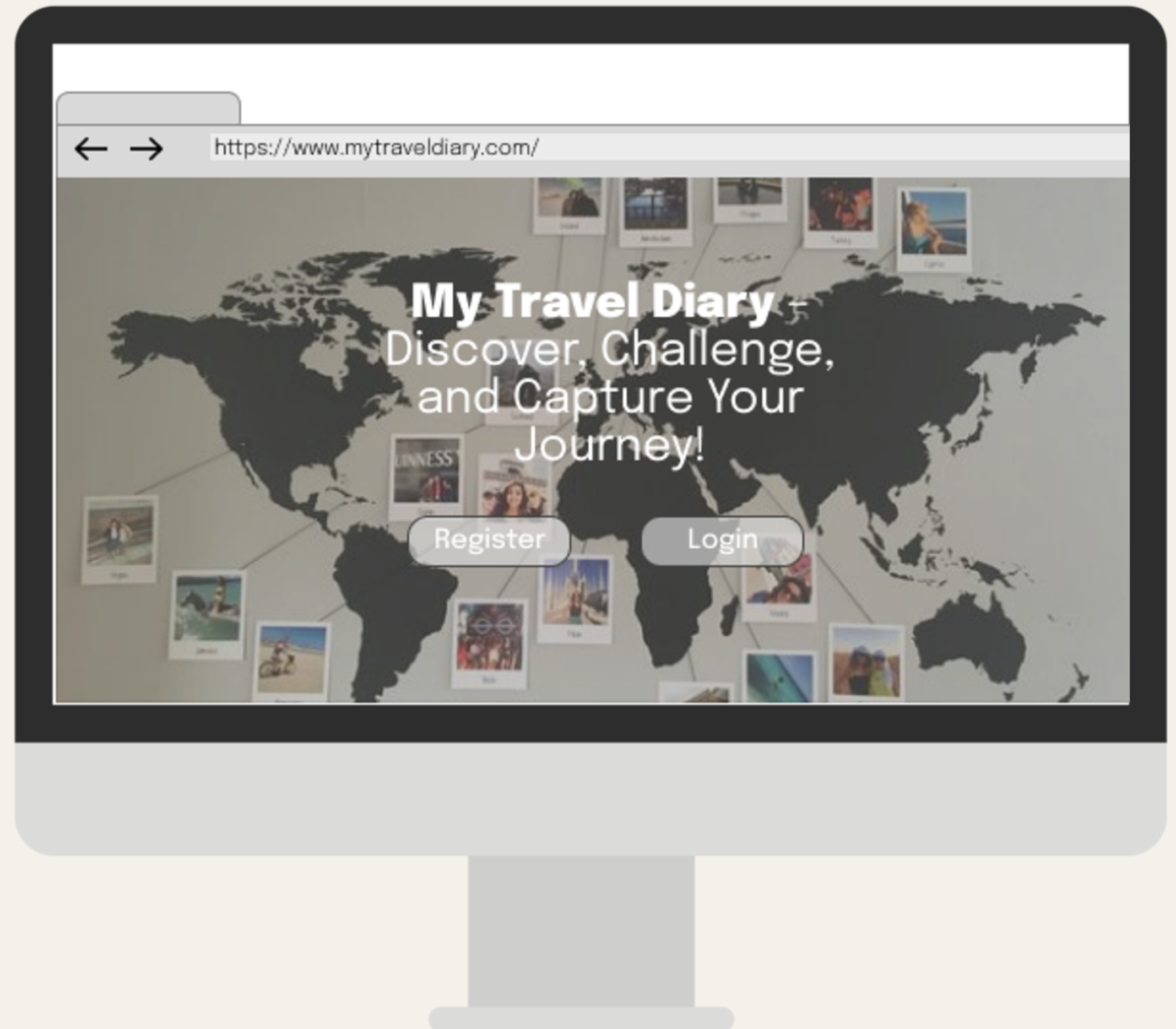
NOTIFICATIONS

PICTURE 3.1.0.

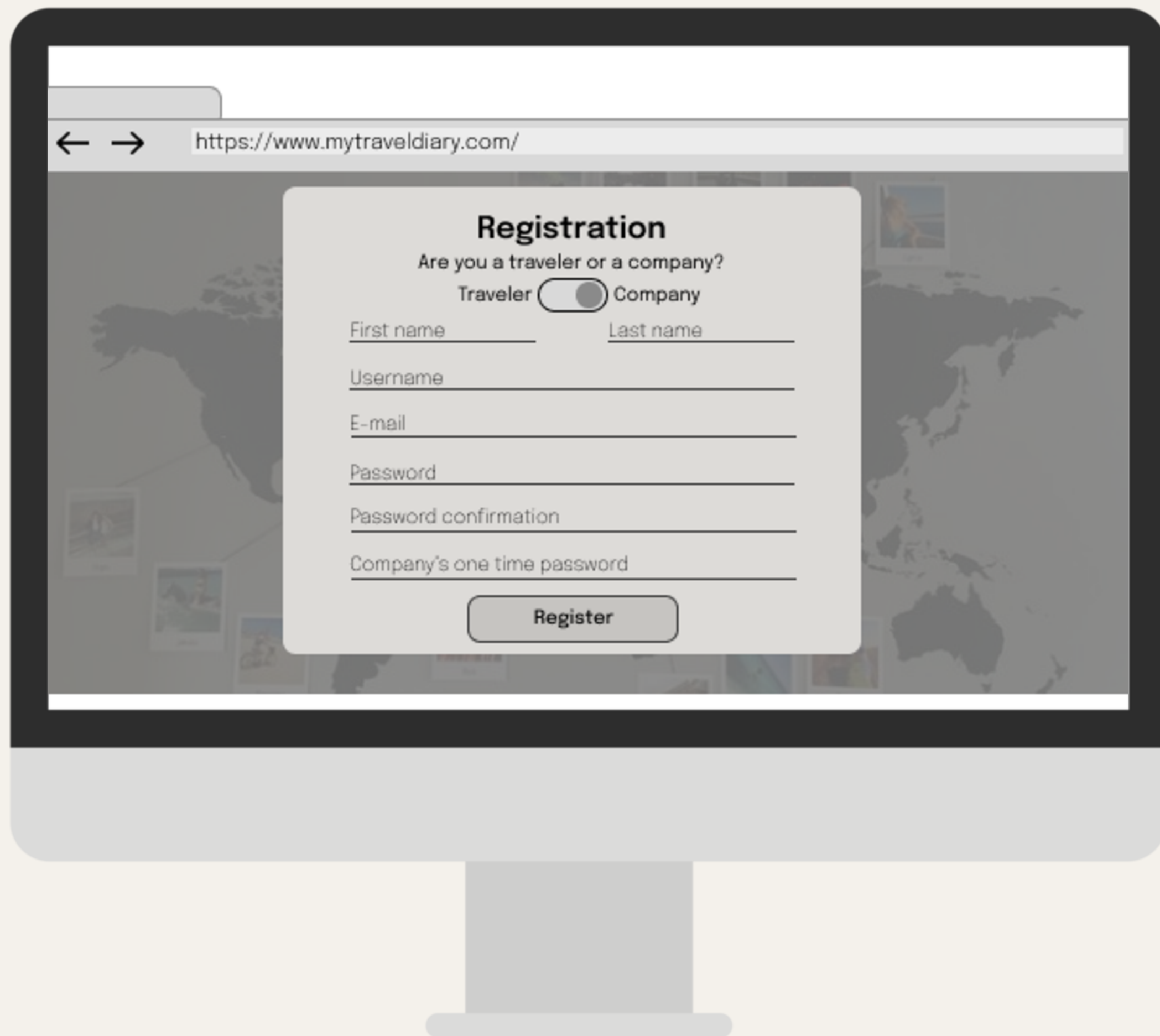


# UI design

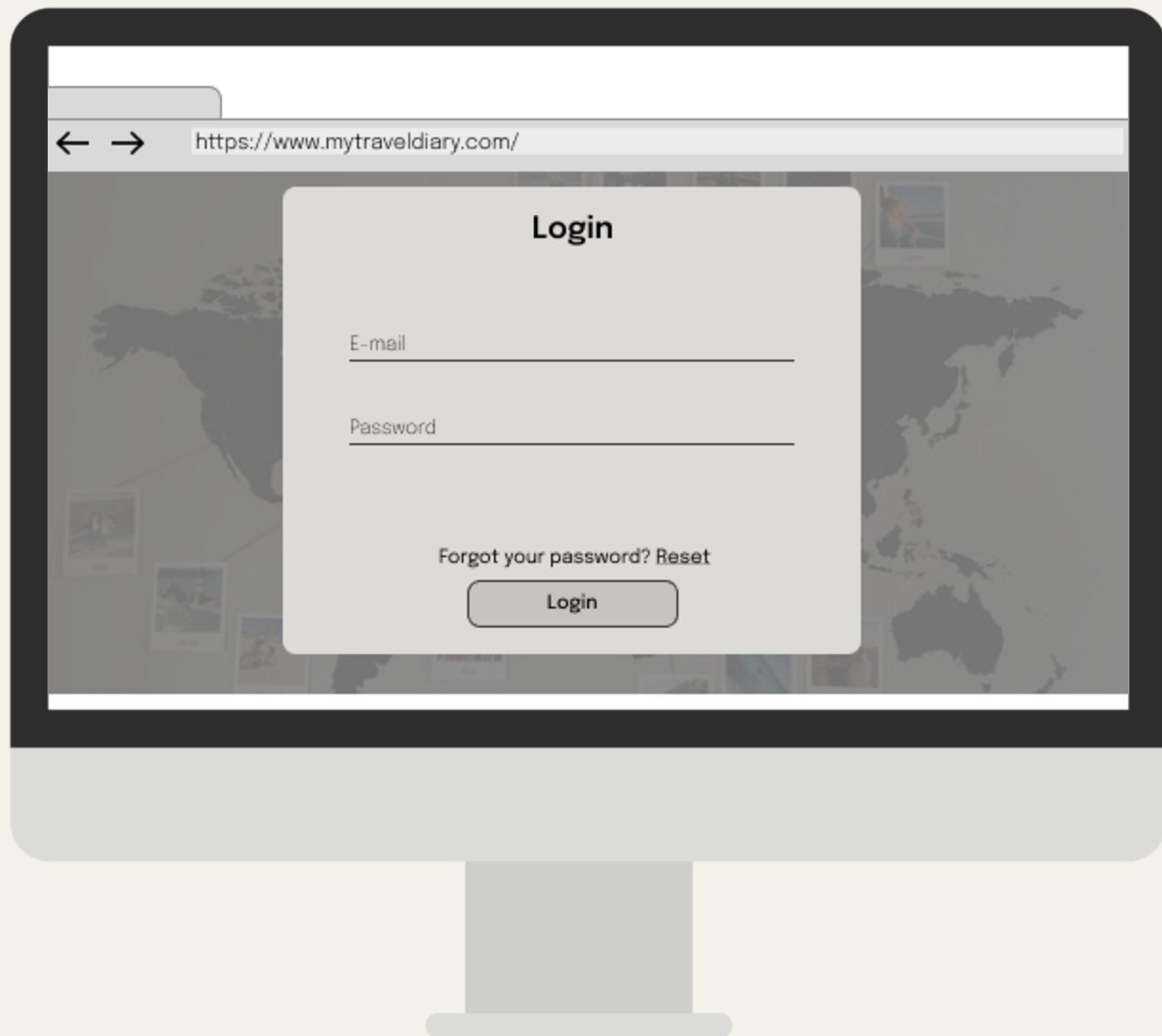
UI design mockups of most important platform pages



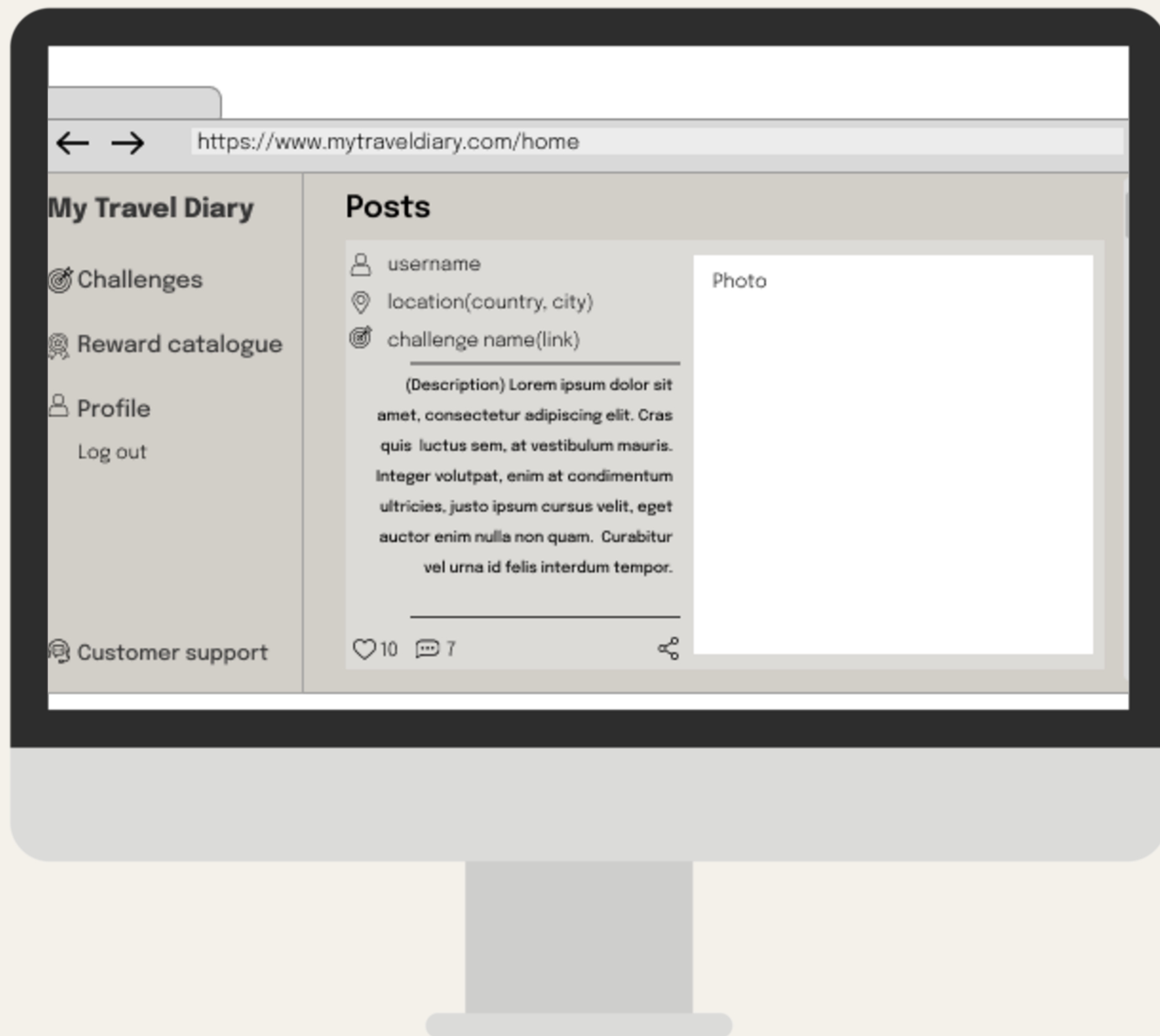




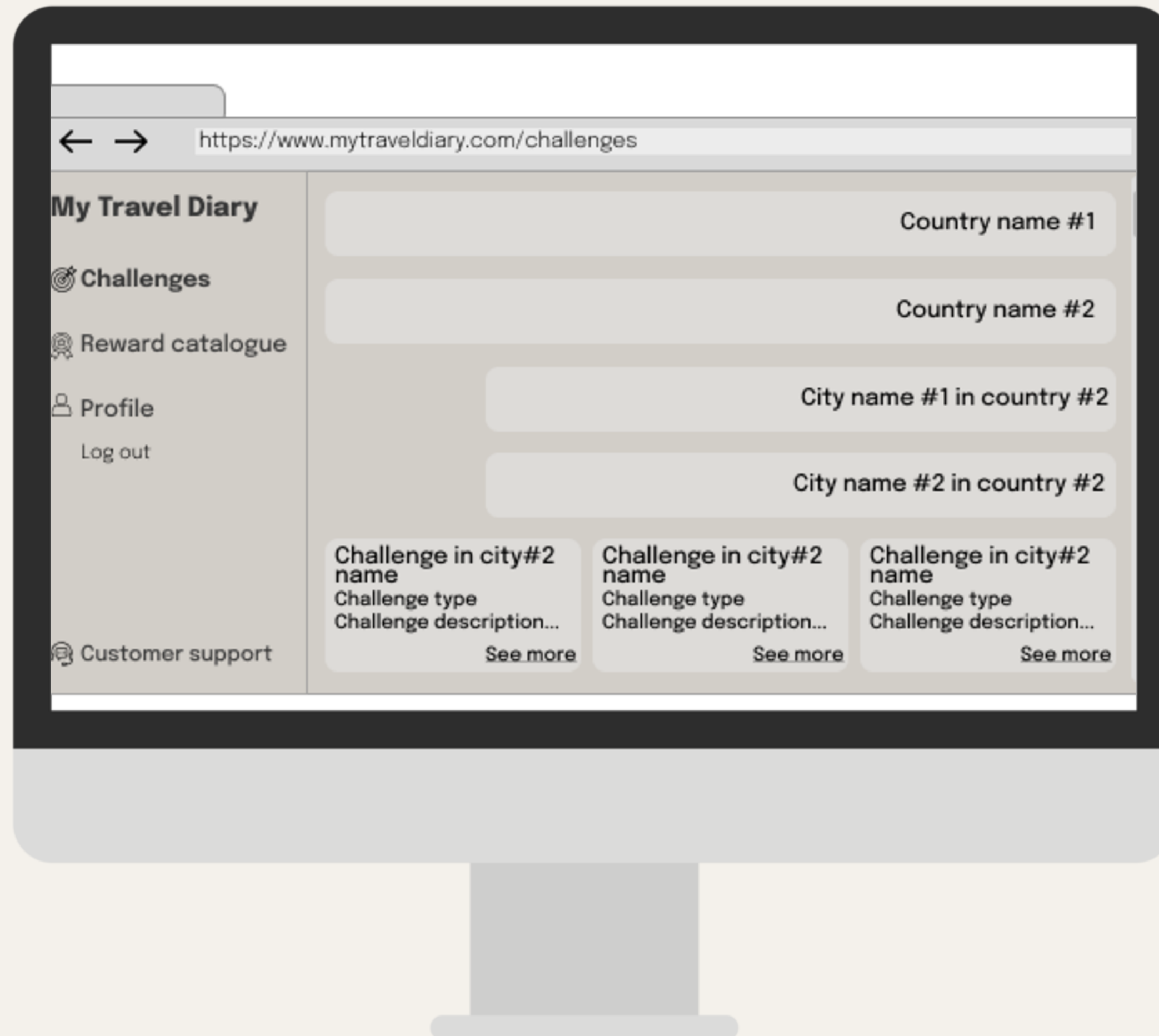




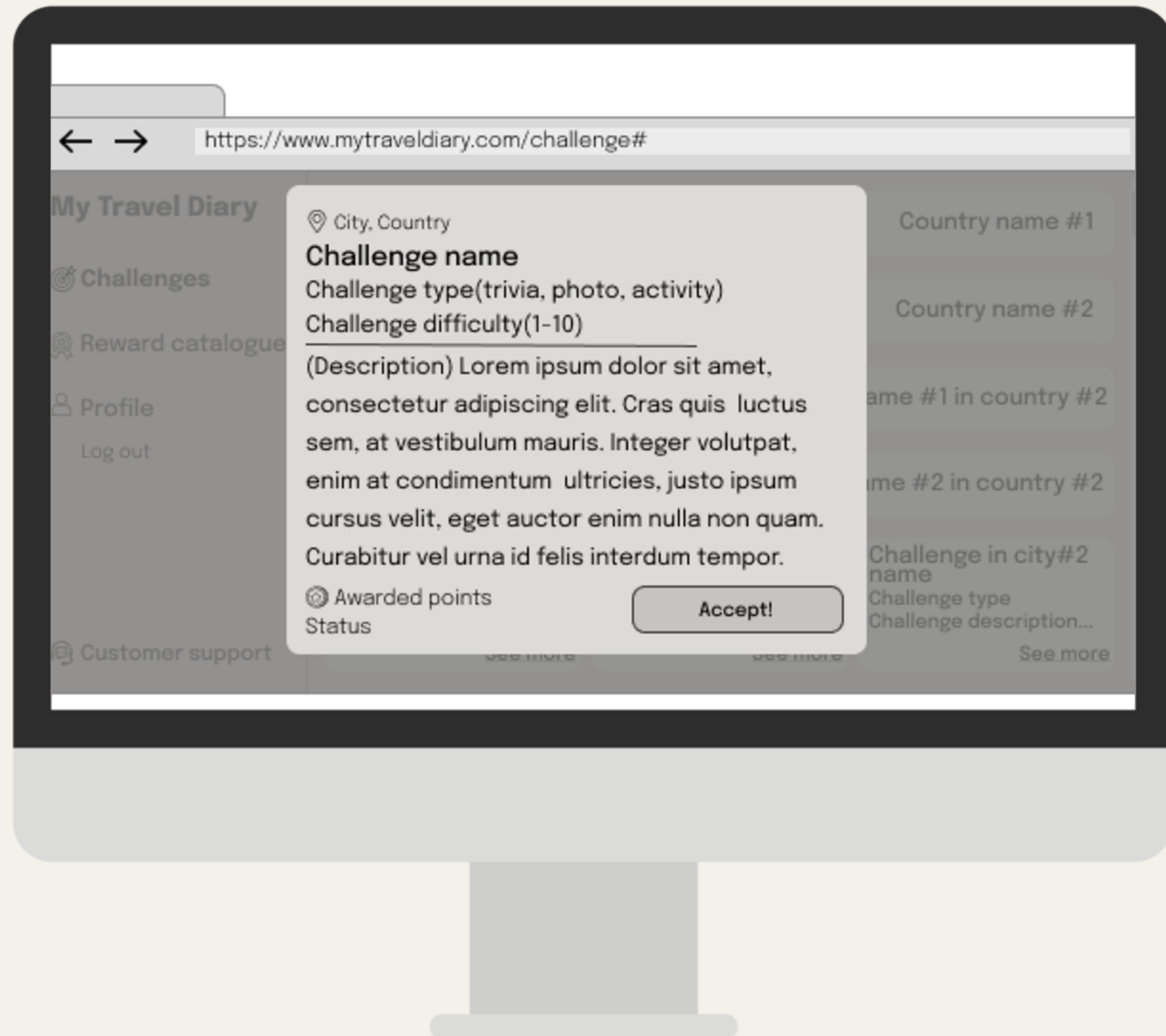




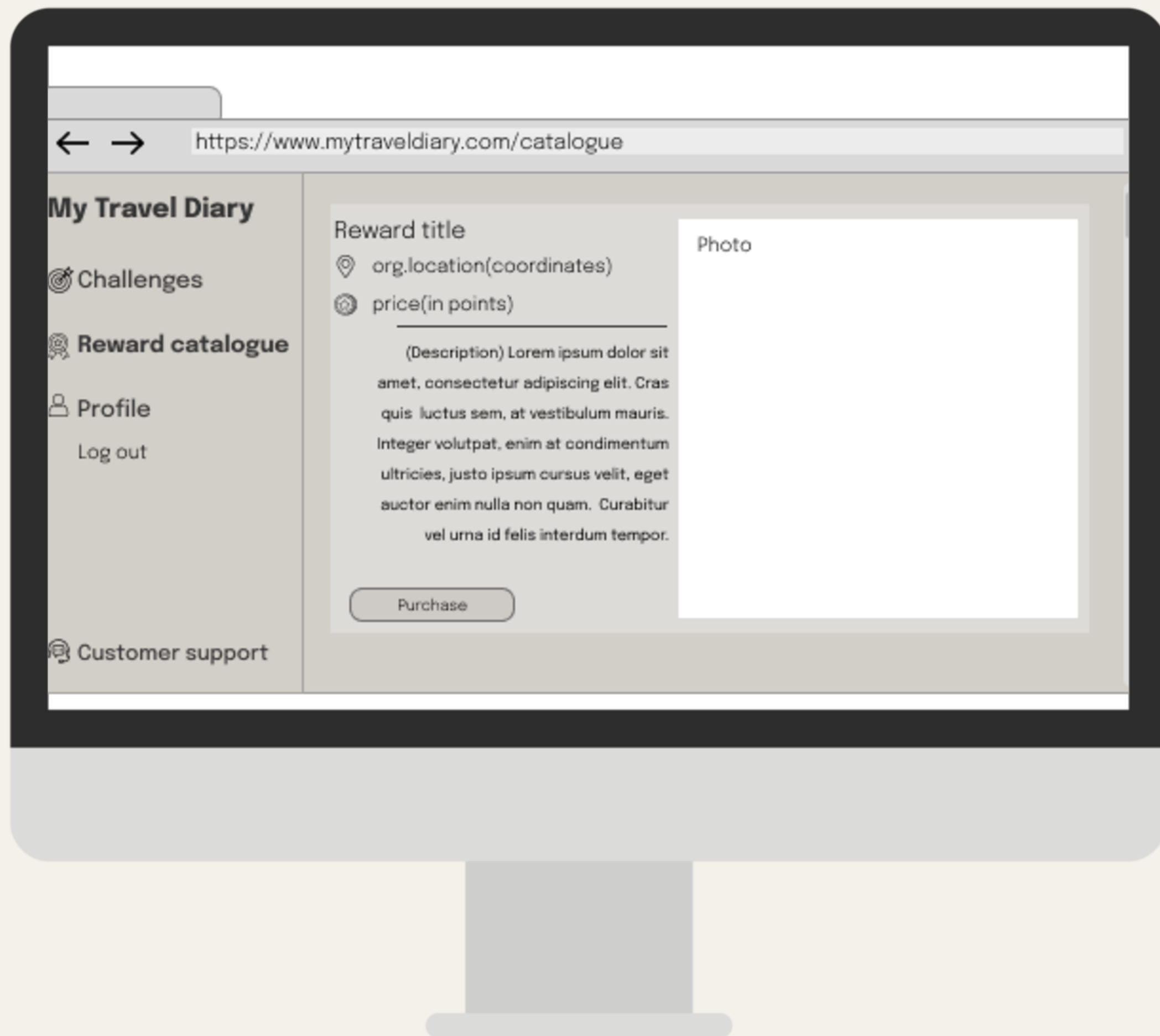




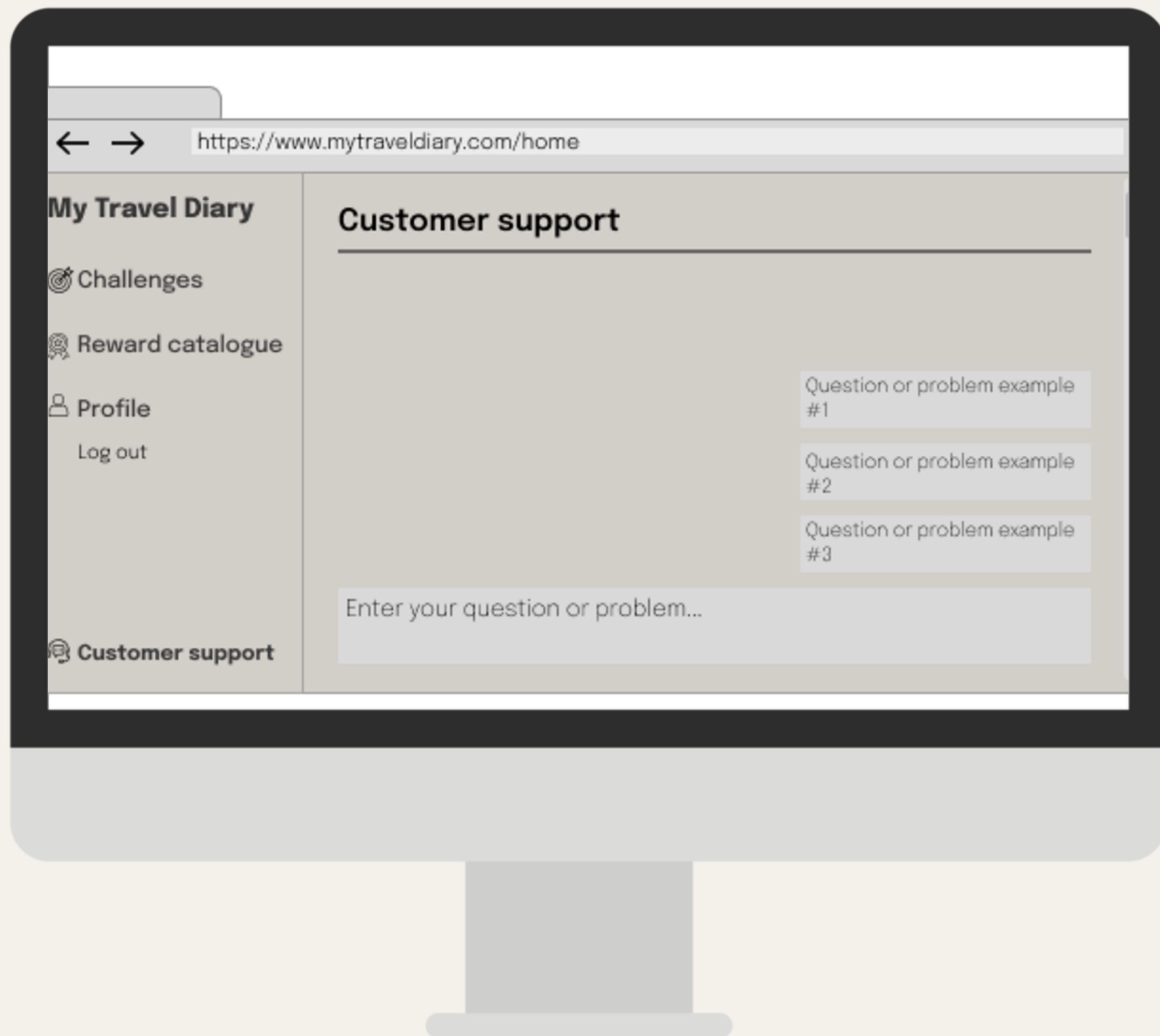


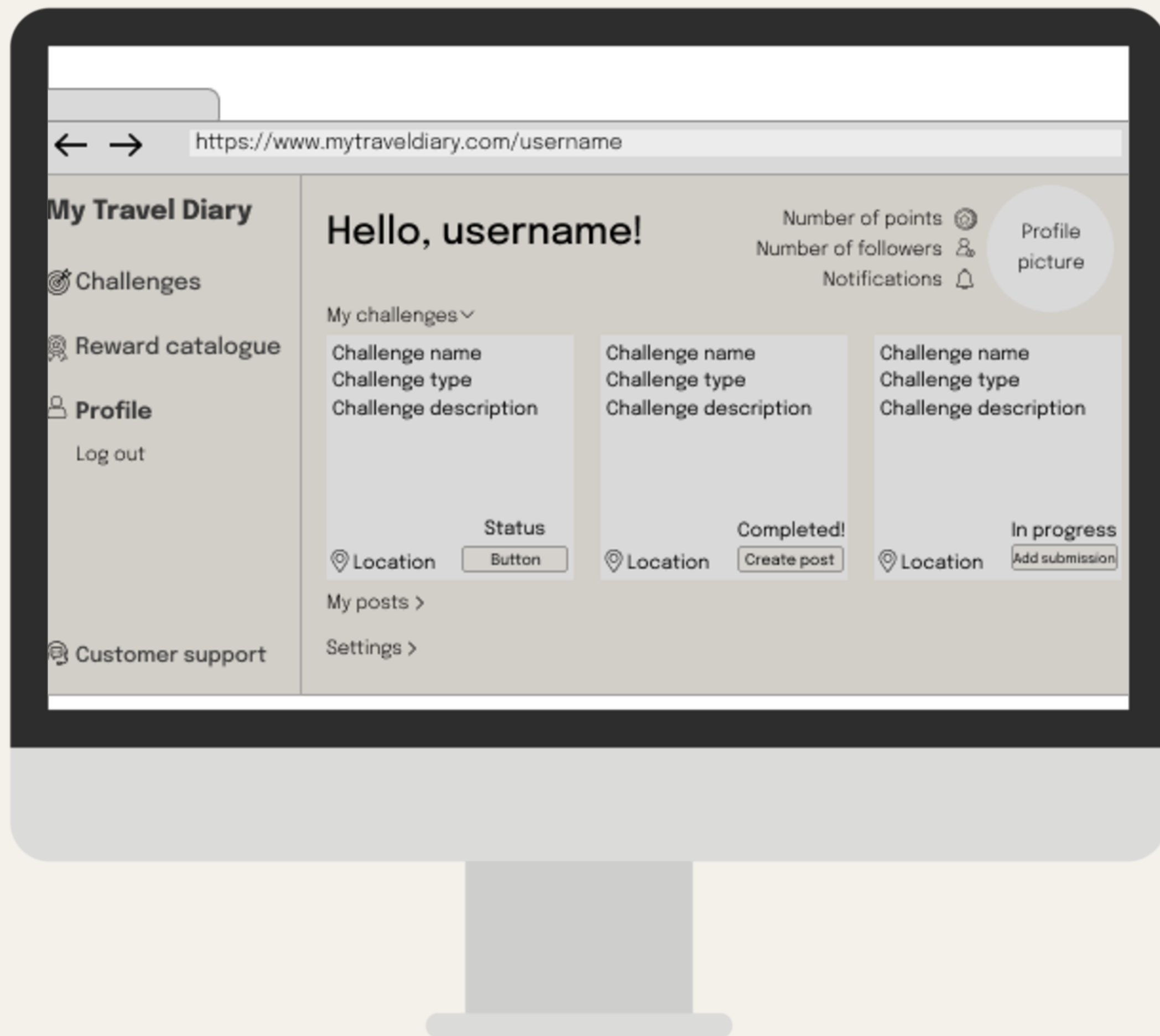




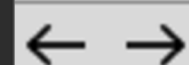












https://www.mytraveldiary.com/username

## My Travel Diary

Challenges

Reward catalogue

**Profile**

Log out

Customer support

# Hello, company name!

Notifications

Profile  
picture

My challenges ▾

Add new challenge

Challenge name  
Challenge type  
Challenge description

Location

Edit challenge

(Number)  
people have  
completed this  
challenge!

Challenge name  
Challenge type  
Challenge description

Location

Edit challenge

(Number)  
people have  
completed this  
challenge!

Challenge name  
Challenge type  
Challenge description

Location

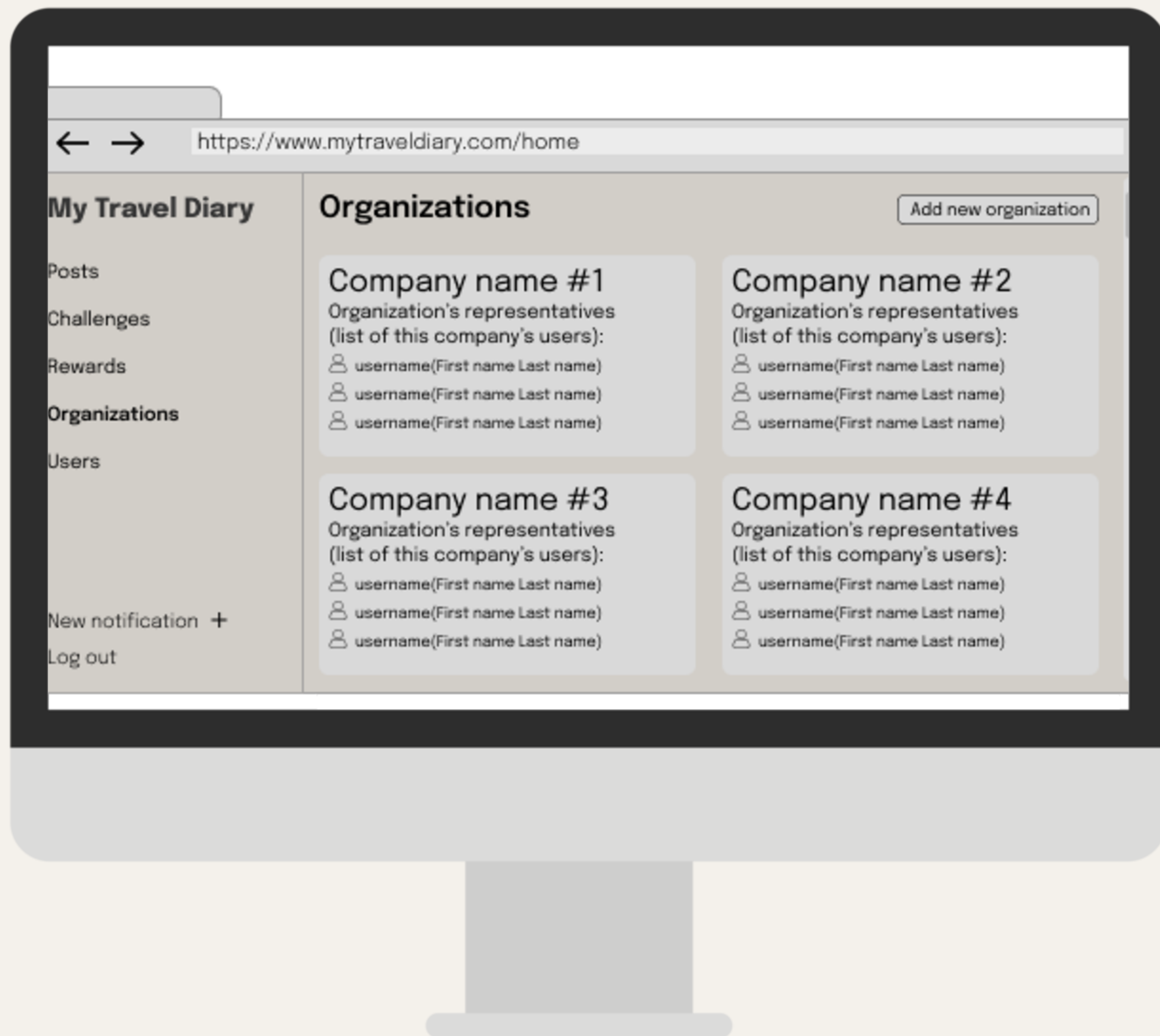
Edit challenge

(Number)  
people have  
completed this  
challenge!

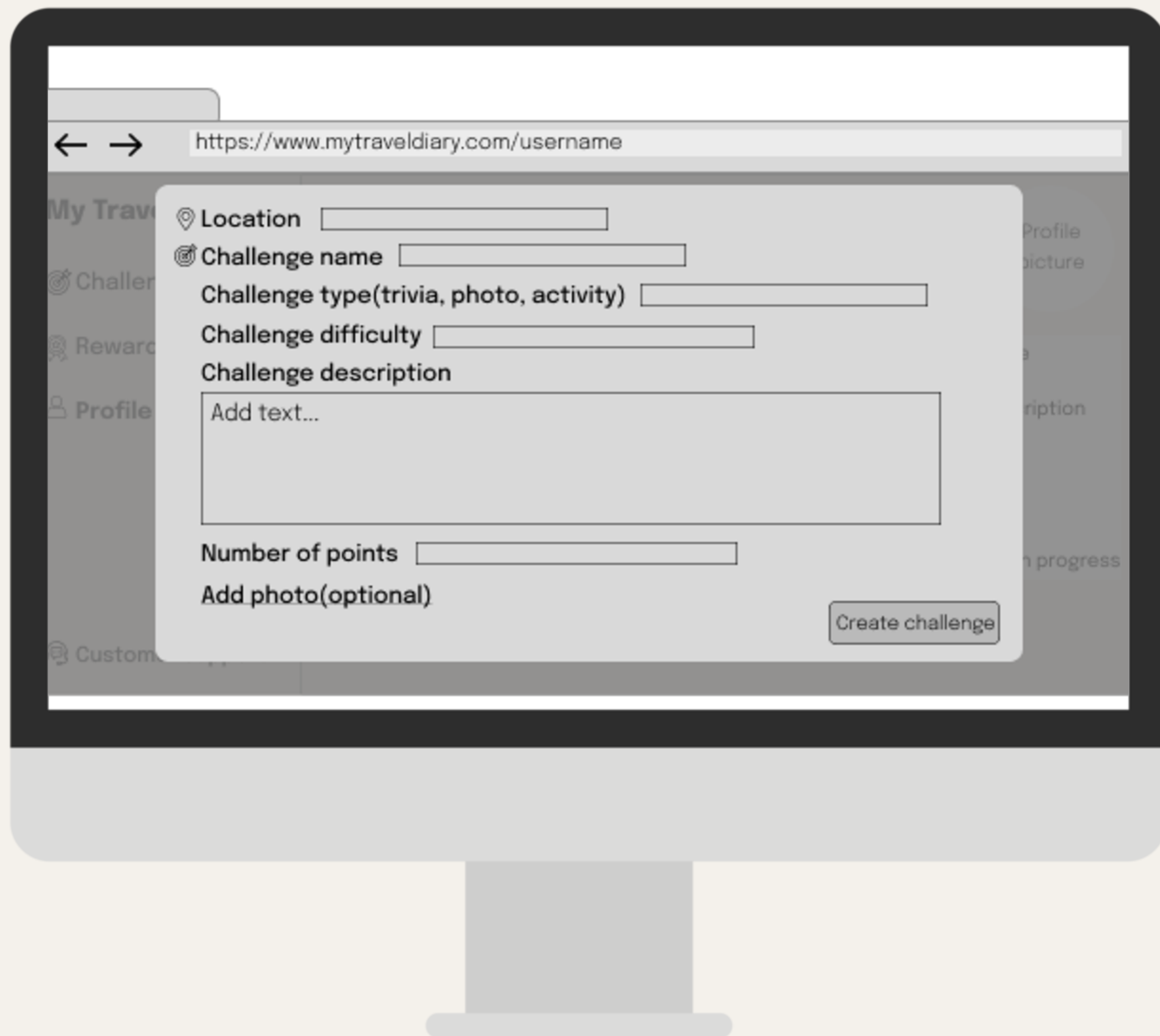
My rewards >

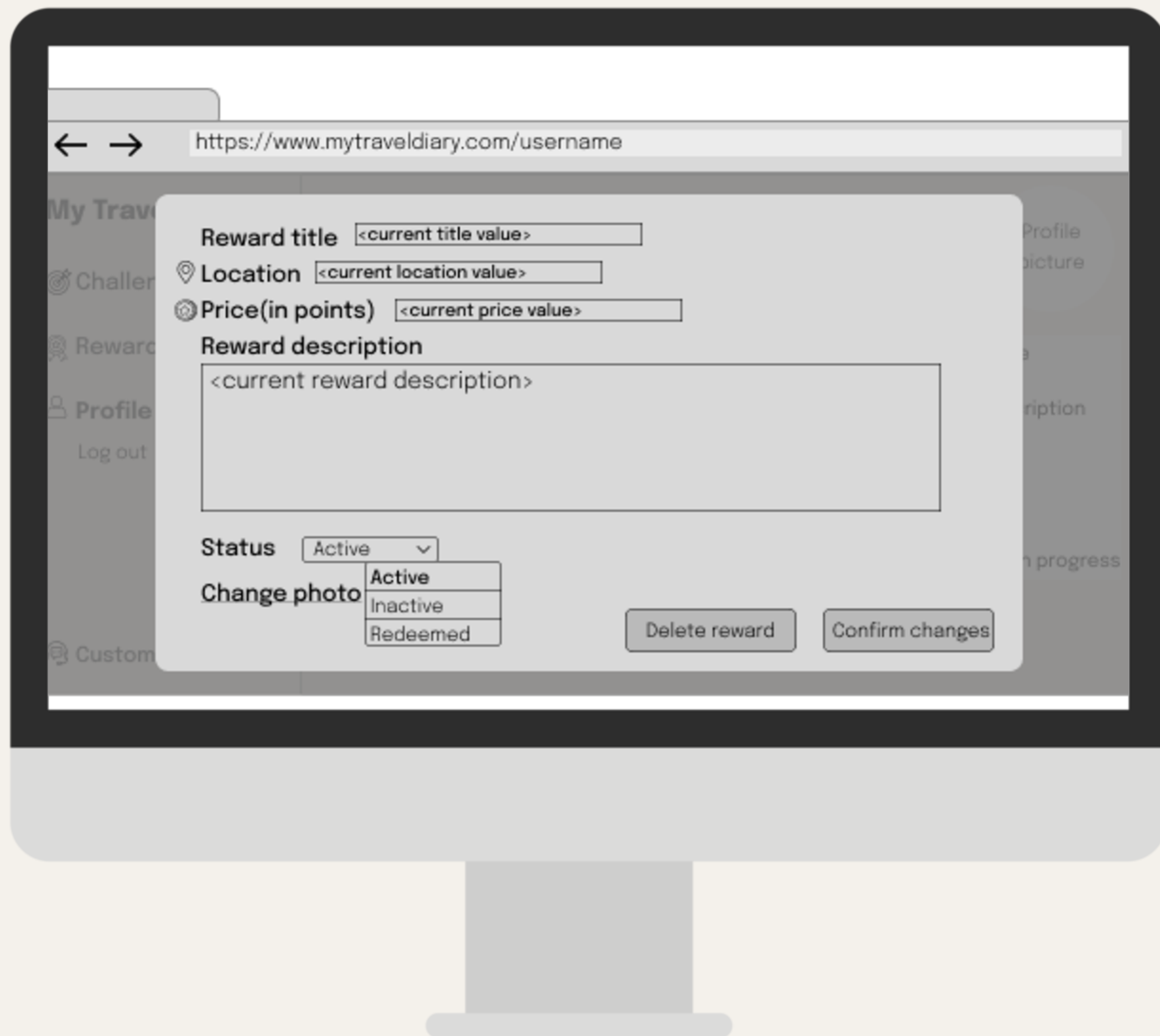
Orders >

Settings >

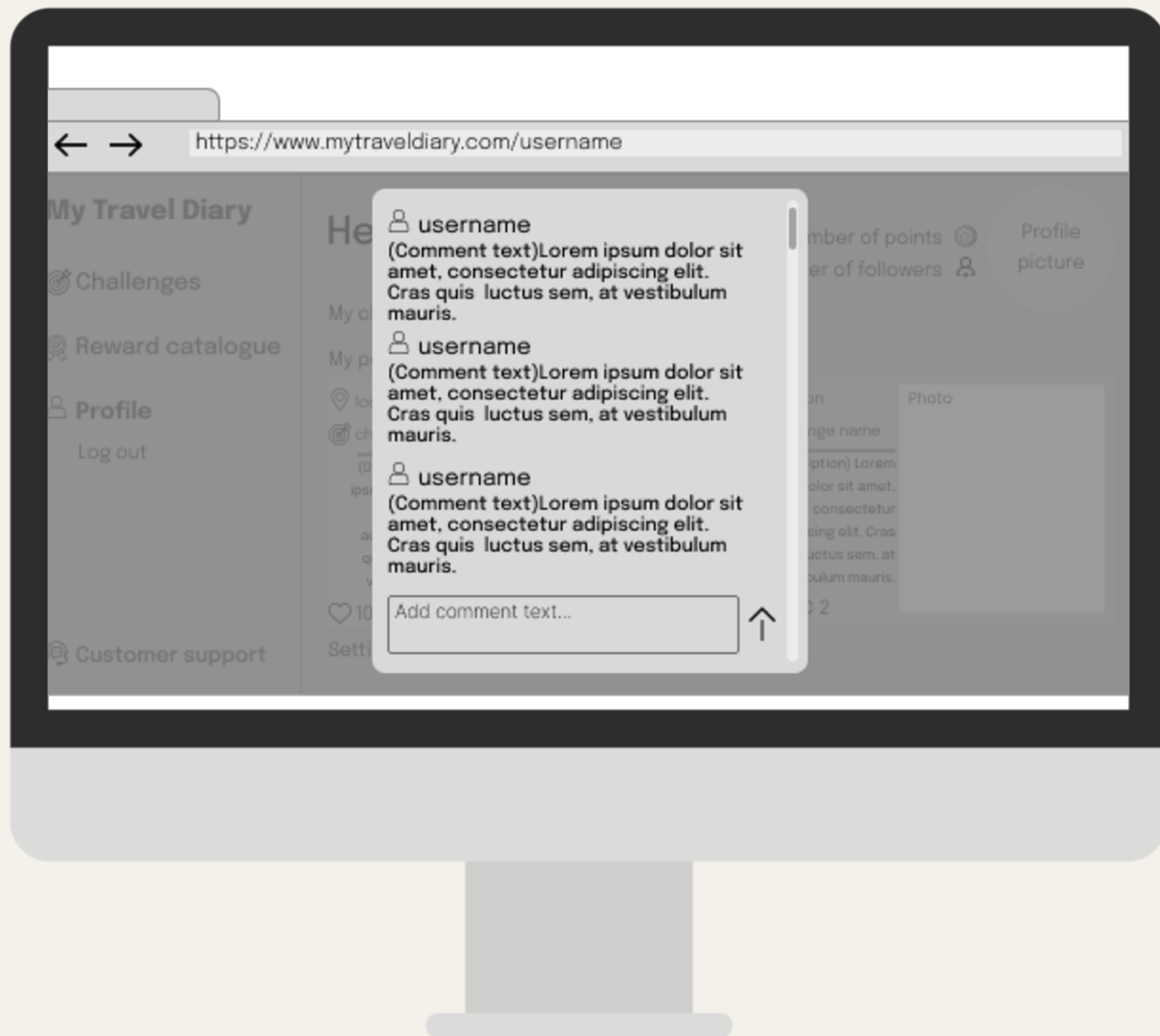














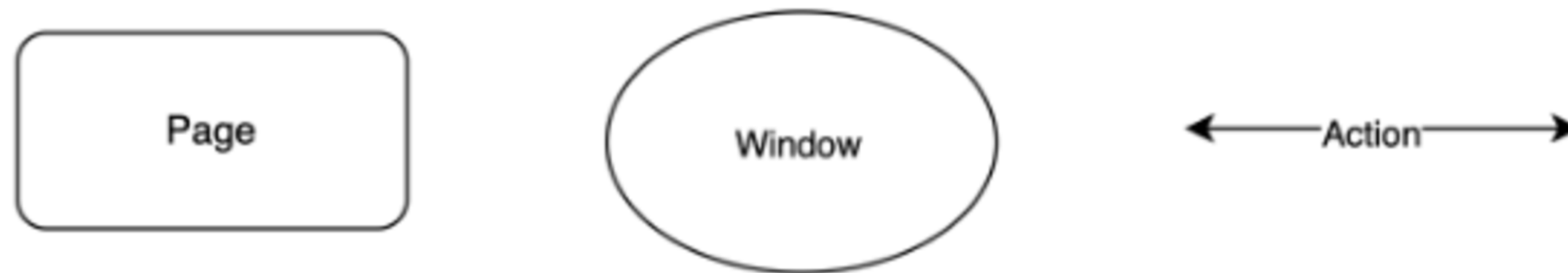
# Navigation Diagrams

This section provides an overview of how users navigate through the application, showcasing the pathways and interactions between different pages and features.



# Legend of Navigation Diagram

This legend explains the symbols used in the navigation diagrams. Each shape represents a specific element

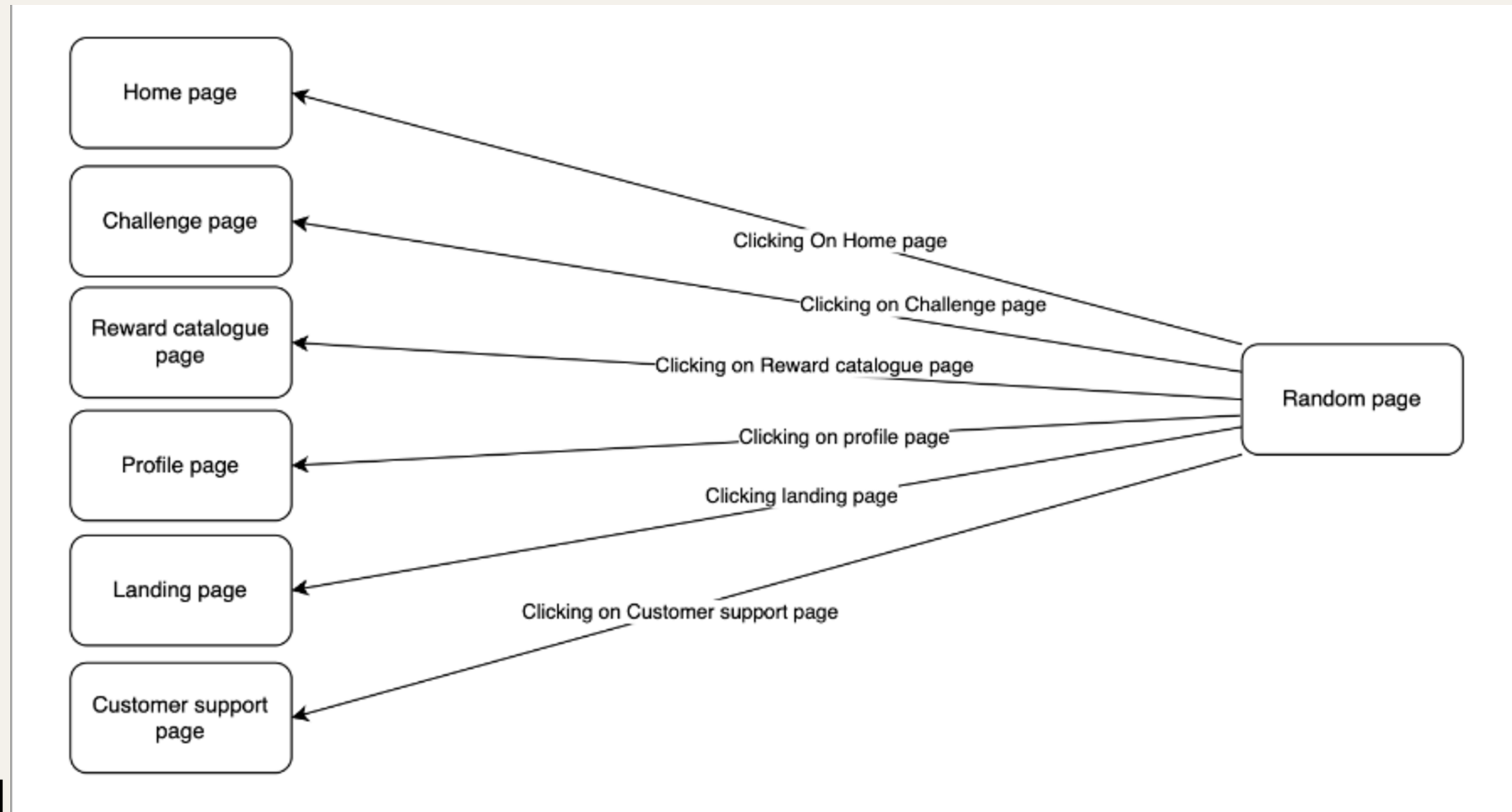


3.1.0

# Menu navigation Diagram

This menu navigation diagram illustrates the structure of our application's navigation. Each page is interconnected, allowing users to access any section

3.1.1





# Partial Functional Design

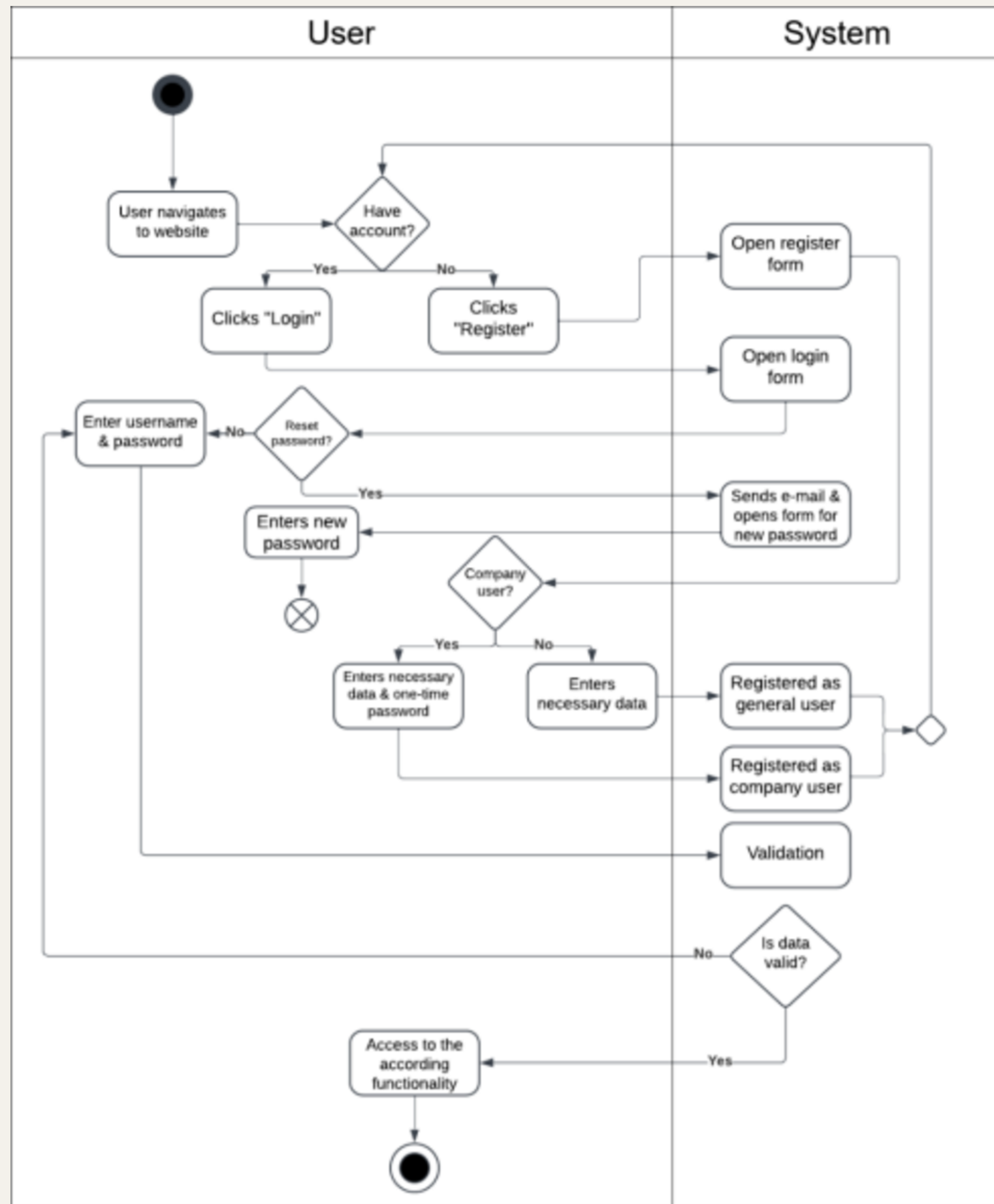
The section contains diagrams which describe the most important functionality of our system.



# User registration and login, activity diagram

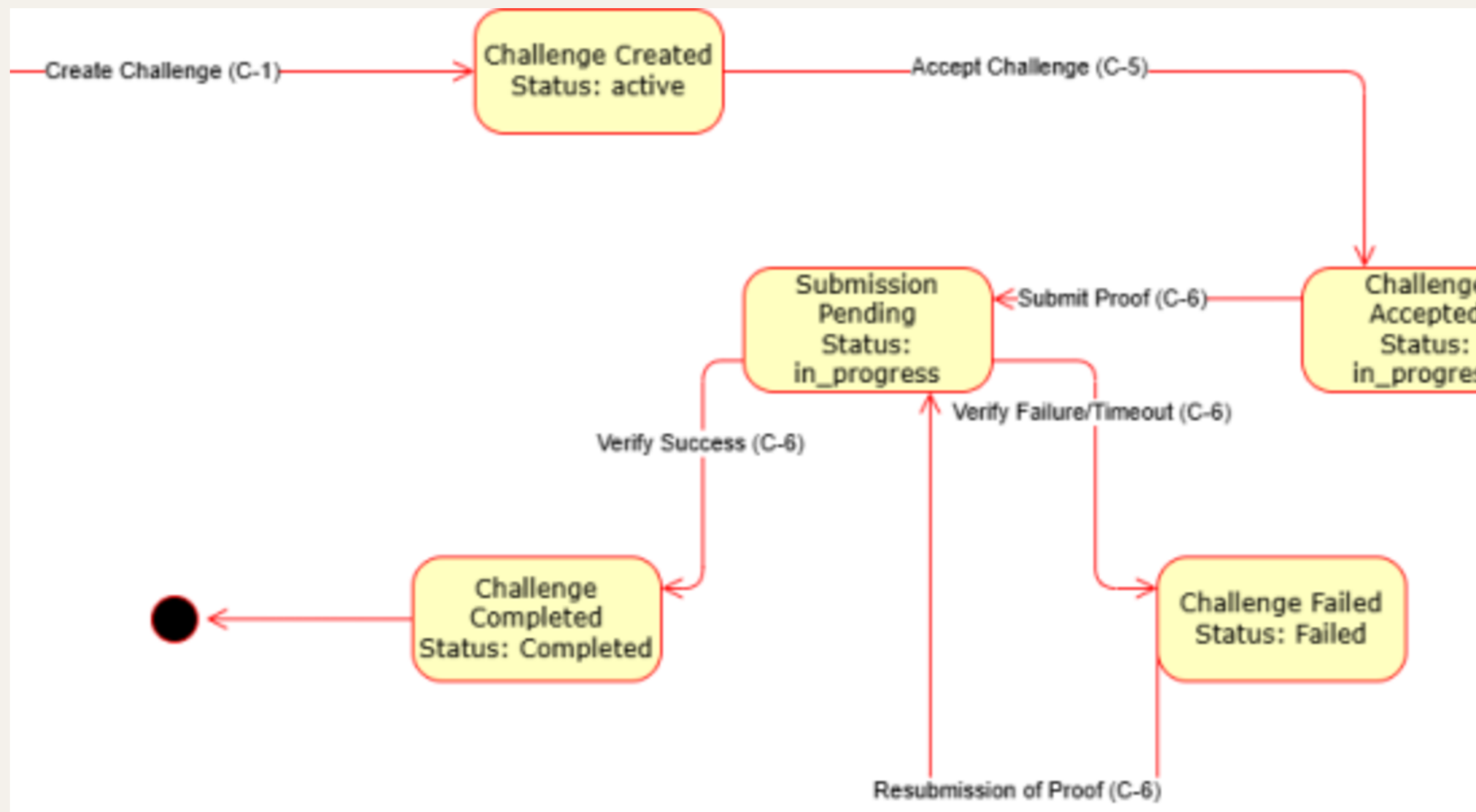
## 3.3.1

The process of registration for general (traveler) and company user in the system and logging in, if the user has already registered





# Challenges module, state transition diagram



The state transition diagram for the challenges module outlines the lifecycle of a challenge

# Point and order module, use case diagram

## 3.3.3

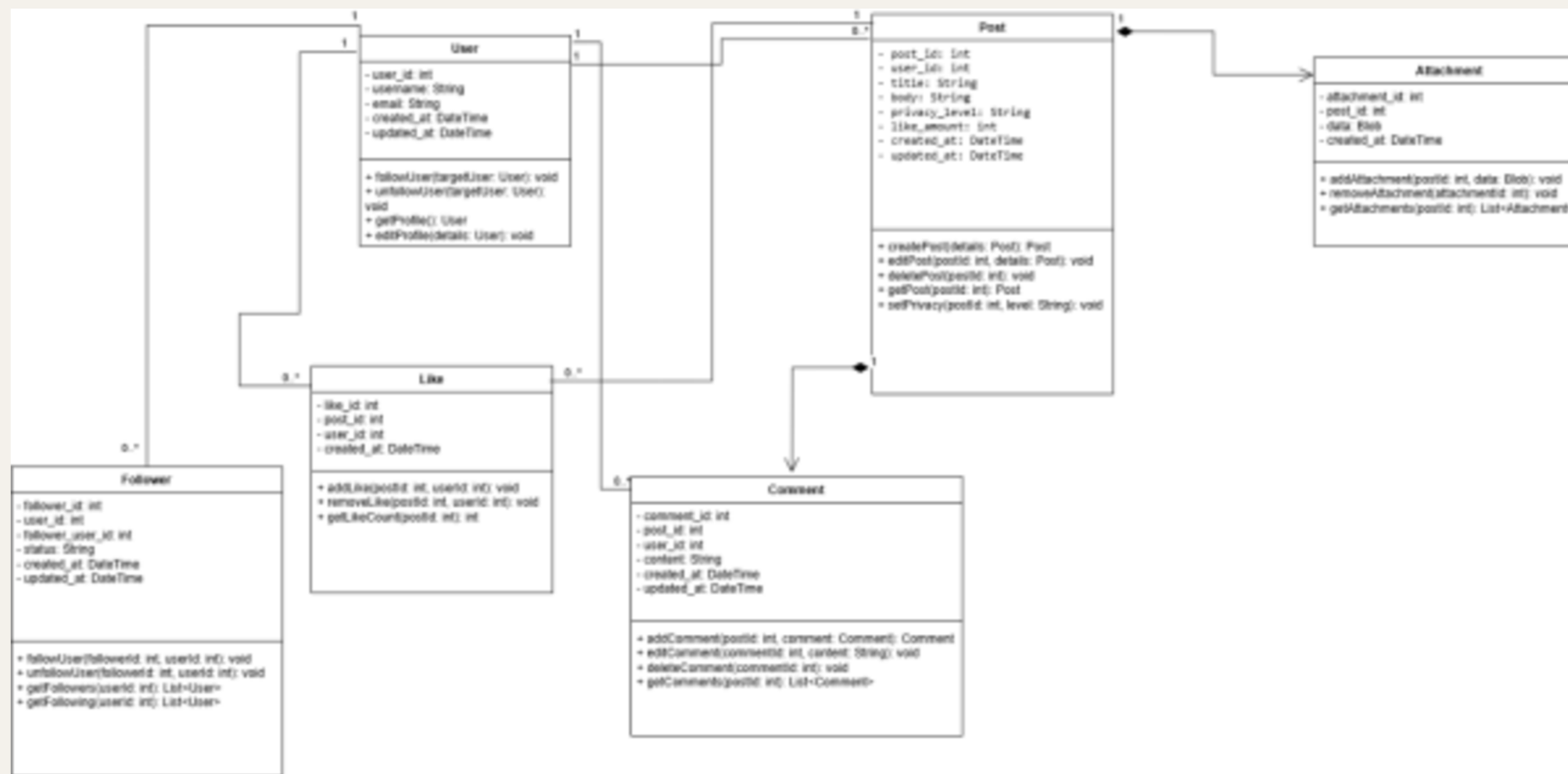
---

The use case diagram shows the interactions between a General User, who completes challenges to earn points, purchases rewards, and places orders, and a Company User, who views and verifies these orders





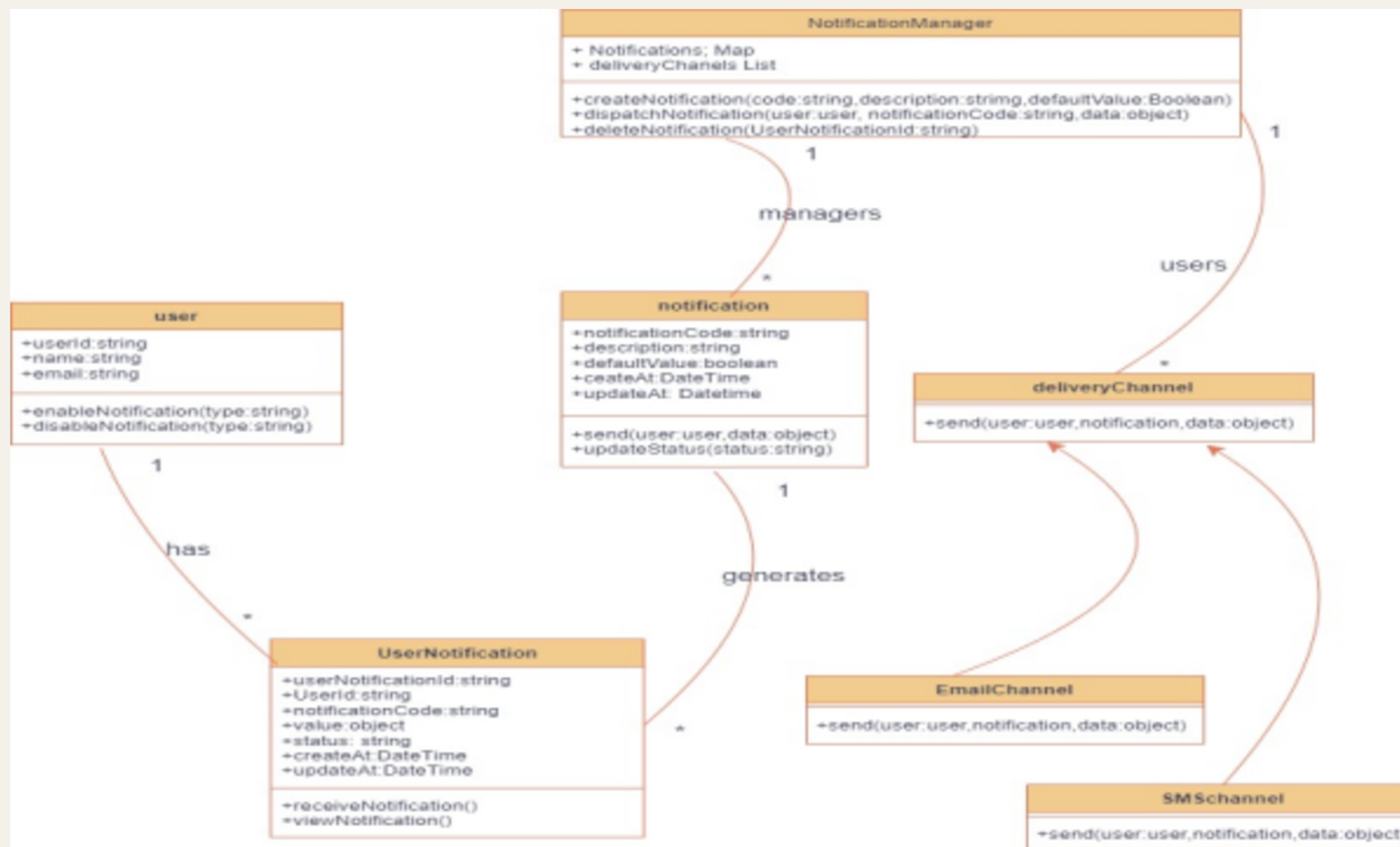
# Social media module, class diagram



The class diagram for the social media module depicts the structural relationships and attributes

It focuses on interactions between classes such as User, Post, Comment, Like, Attachment, and Follower.

# Object diagram for notification functionalities



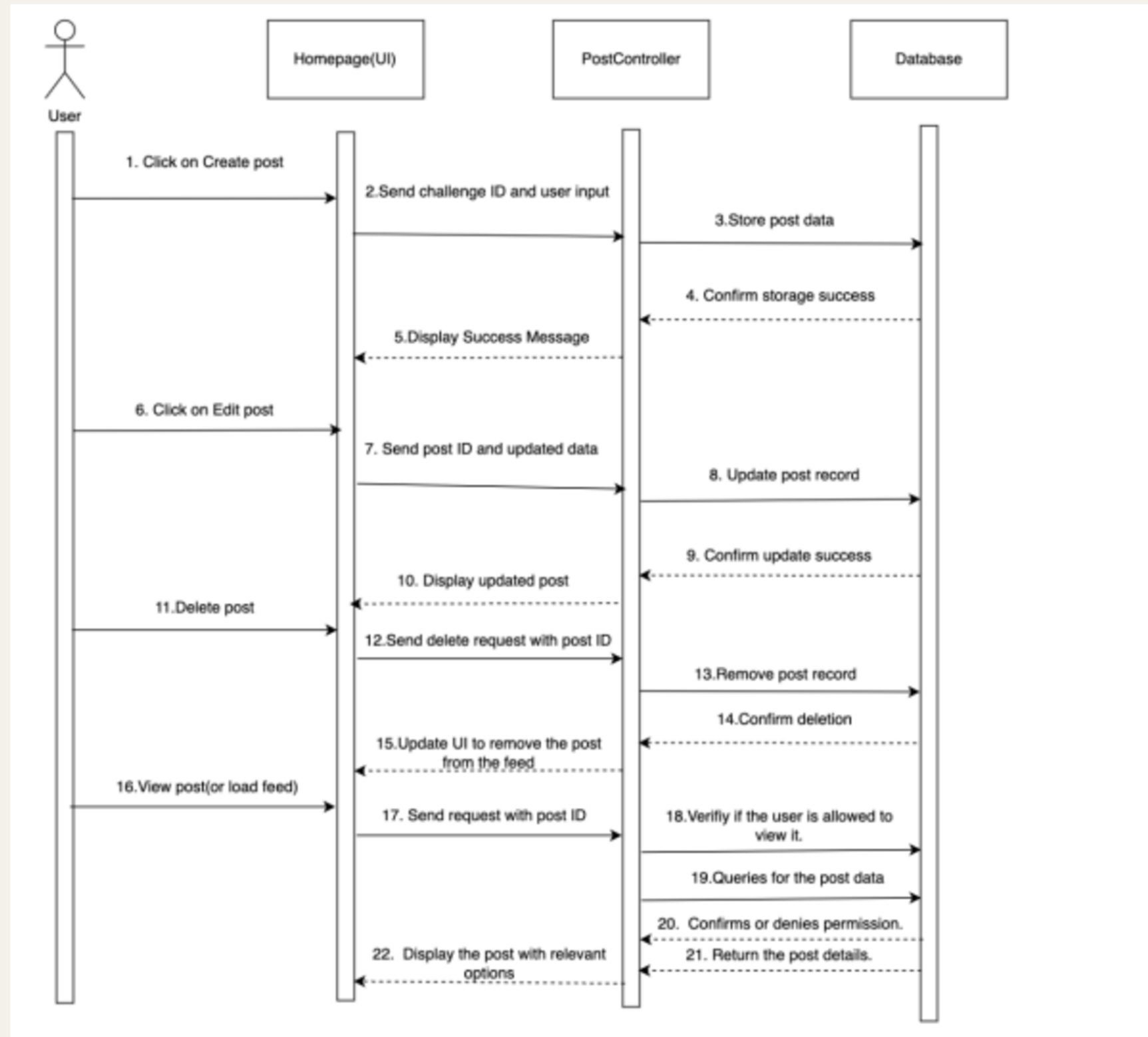
The diagram illustrates a notification management system

Relationships include users having multiple notifications, notifications linked to users, and the Notification Manager managing all delivery channels.



# Posts Module, Sequence Diagram

This diagram outlines the lifecycle of posts, showing interactions between the user, UI, backend (Post Controller), and database. Users can create, edit, delete, or view posts.





Thank you